



REQUEST FOR COMMISSION ACTION
CITY OF INDEPENDENCE
February 25, 2021

Department Administration

Director Approval Kelly Passauer

AGENDA ITEM Consider a request for approval of the exact location for a statue of Remington at the northwest corner of Penn/Laurel.

SUMMARY RECOMMENDATION Approve the request.

BACKGROUND On November 14, 2019 the Commission authorized placement of a Remington statue near the 1916 City Hall building. On March 12, 2020, the Commission authorized the Remington statue location to be moved from 1916 City Hall to downtown on the northwest corner of Penn/Laurel with the exact location to be determined once the funds have been raised. The exact location has now been decided on and it is anticipated the statue will be installed in April. The cost of the statue, including installation will be funded from donations.

SUGGESTED MOTION I move to authorize the placement of a Remington statue on the northwest corner of Penn/Laurel at the exact location as presented.

SUPPORTING DOCUMENTS Pictures of exact proposed location of statue at the northwest corner of Penn/Laurel.

Kelly Passauer

From: Russell Baker
Sent: Saturday, February 20, 2021 10:10 AM
To: Kelly Passauer
Subject: Re: FW: Monument Base

Kelly,

Attached are pictures of a cardboard mock-up of what the sculptor suggested for the base of the statue. The footprint is 24" wide X 40" long and is 24" tall. The top of the base is beveled back to 18" wide by 40" long. The beveled face on the front of the base measures 18" X 40". The plaque on the beveled face measures 12" wide X 16" tall. I have the mock-up setting on the NW corner of Penn and Laurel where I envision it setting.

Thanks,

Rusty







On Fri, Feb 19, 2021 at 9:17 AM Kelly Passauer <kellyp@independenceks.gov> wrote:

Rusty,

In speaking to you on the phone, I understand that you need final approval to install the base around April 24, 2021. Can you send me something showing the exact placement location at the intersection? Below is an aerial of the intersection of Penn/Laurel. You can draw the exact location on the aerial or place a piece of cardboard cut to the size of the base and take a picture of it, or both. Once I receive this information, I will place it on the Commission agenda.

Here is the motion that was approved on March 12, 2020; "I move to authorize the placement of a Remington statue on the northwest corner of Penn/Laurel with the exact location to be determined once the funds have been raised."

D. Consider modifying the location for the Remington Statue.

On November 14, 2019 the Commission authorized placement of a Remington statue near the 1916 City Hall building with the exact location to be determined once the funds had been raised. City staff has received a request from Wendy Hull representing the VFW to be on the agenda to further discuss this request. In verbal conversations with Wendy Hull, she has indicated that they would like to move the proposed location of this statue from 1916 City Hall to downtown on the northwest corner of Penn/Laurel.

Motion:

On the motion of Commissioner Ysusi, seconded by Commissioner Hayse the Commission authorized the placement of a Remington statue on the northwest corner of Penn/Laurel with the exact location to be determined once the funds have been raised.

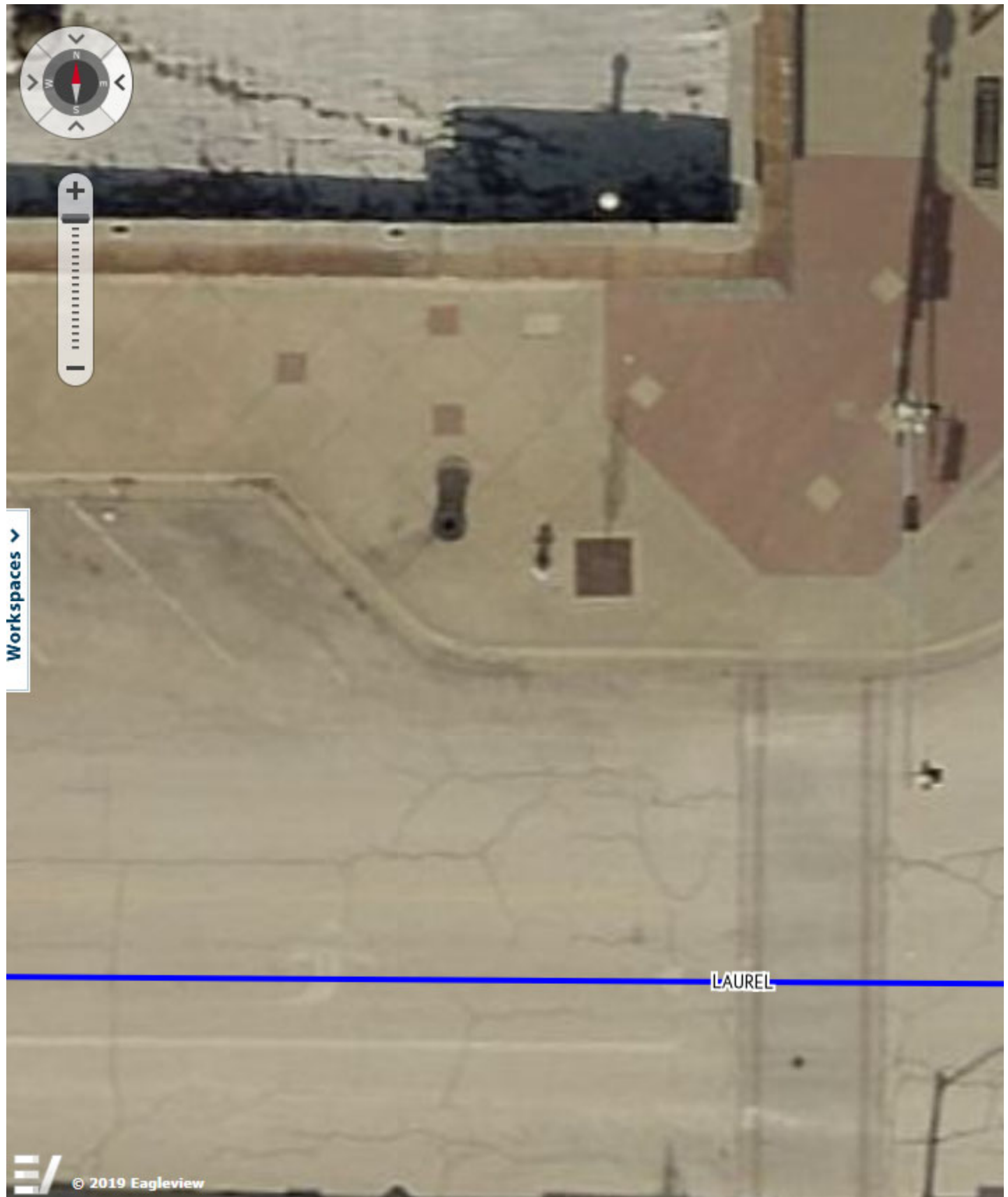
Aye: Ysusi, Caflisch, Hayse

Nay: None

Here is a link to that agenda item: <https://www.independencexs.gov/AgendaCenter/ViewFile/Item/2408?fileID=5879>

Thanks!

Kelly



Workspaces ▾

From: Russell Baker
Sent: Friday, February 19, 2021 2:54 AM
To: Kelly Passauer
Subject: Monument Base

Kelly,

Attached is the drawing from the sculptor of the statue base she is recommending for the sculpture. It is still true to the original footprint but is another foot taller. The drawing is not necessarily to scale. We also took out the installation of the donor bricks around the bottom of the base and added a bronze plaque on the side of the base in their place (also attached).

As we discussed on the phone, the original base was set at 2' wide X 4' long X 2' tall. I think what I would like to see is that the height of the base remains at 2 to 2 1/2 foot tall, instead of the 3' on the drawing, but still with the chamfered side to accommodate the plaque.

Also attached is a picture of a maquet of the full size statue. The maquet is an exact replica of the memorial statue and includes the birds that are not present on the full size clay mock up pictures (also attached).

The sculpture is near completion at the foundry at this time. The plaque is also being cast and will be shipped sometime next month. We are wanting to have the memorial dedication Saturday, April 24th on site at the NW corner of Penn and Laurel. Sculptor, Kristen Douglas-Seitz, will be in town for the dedication along with several other key speakers for the dedication.

Please let me know what I need to do at this point so that I can coordinate the construction of the base in time to have it in place by the 24th. SEK Construction will be handling the construction of the base. I am under the impression that they have done several of the other bases for some of the other sculptures in the downtown area.

Thank you,

Rusty







