



# December 2018 Sales Tax Report

City of Independence Kansas



## Sales Tax Report for December 2018

### One Percent Sales Tax – General Fund

The attached spreadsheet and graphs provide comparisons by fiscal year of the **one (1) percent** sales tax levied for City purposes; another one percent is levied for the Special Use Sales Tax Allocation, and another one percent for education.

NOTE: the “receipts” reported from the State of Kansas to the City for any given month are from sales generated two months prior. For example, the December receipts shown in this report were from sales in October.

### **December 2018 is the twelfth month in the FY2018 Sales Tax Revenue account.**

- **December** receipts totaled **\$166,699**, which is a slight **DECREASE of \$175** from last December, or **down 0.1%**. Please look at the Graph II, “December 1% Sales Tax 10 Year History” in the attached report.
- Sales tax receipts are **up 2.9 percent** for the 2018 fiscal year, or **\$55,369** over fiscal year 2017.
- Sales tax receipts for FY2018: **\$1,955,089**  
2018 Budget: **\$1,931,100**  
Increase over budget: **\$ 23,989**
- Ten out of twelve months either equaled or had an increase in sales tax receipts over last year. Only February and April receipts were significantly lower than the previous year.





## City of Independence Sales Tax - 1% City

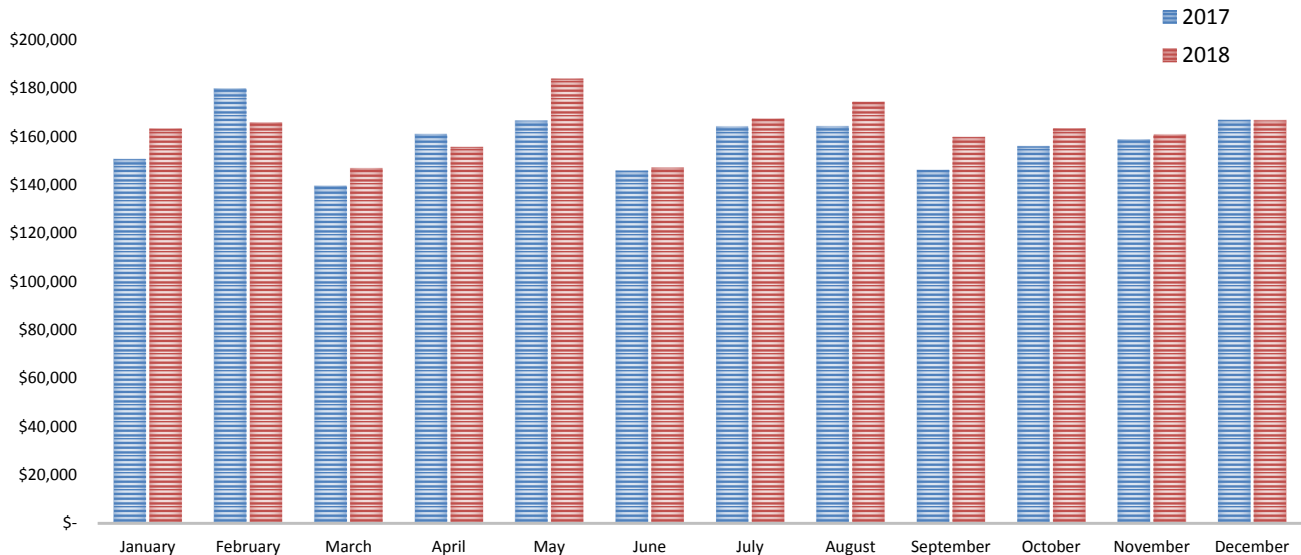
### Comparison and History January - December 2018

Month	Fiscal Year 2013	Fiscal Year 2014	Fiscal Year 2015	Fiscal Year 2016	Fiscal Year 2017	Fiscal Year 2018	% Change FY 17-18	% Change YTD
January	162,711	169,077	165,466	155,458	150,653	163,240	8.4%	8.4%
February	176,956	199,950	179,589	178,180	179,791	165,834	-7.8%	-0.4%
March	143,602	169,021	150,704	150,239	139,664	146,833	5.1%	1.2%
April	146,406	182,580	147,971	155,915	160,947	155,702	-3.3%	0.1%
May	164,579	191,956	161,560	175,729	166,595	183,899	10.4%	2.2%
June	151,693	177,528	164,169	156,021	145,881	147,180	0.9%	2.0%
July	196,523	175,552	175,434	167,882	164,178	167,392	2.0%	2.0%
August	159,740	188,894	176,702	155,386	164,255	174,341	6.1%	2.6%
September	157,313	173,515	176,049	160,338	146,156	159,813	9.3%	3.3%
October	170,125	165,823	162,530	164,757	155,995	163,360	4.7%	3.4%
November	158,817	173,901	160,200	158,752	158,730	160,797	1.3%	3.2%
<b>December</b>	<b>192,767</b>	<b>159,004</b>	<b>175,816</b>	<b>150,228</b>	<b>166,874</b>	<b>166,699</b>	<b>-0.1%</b>	<b>2.9%</b>

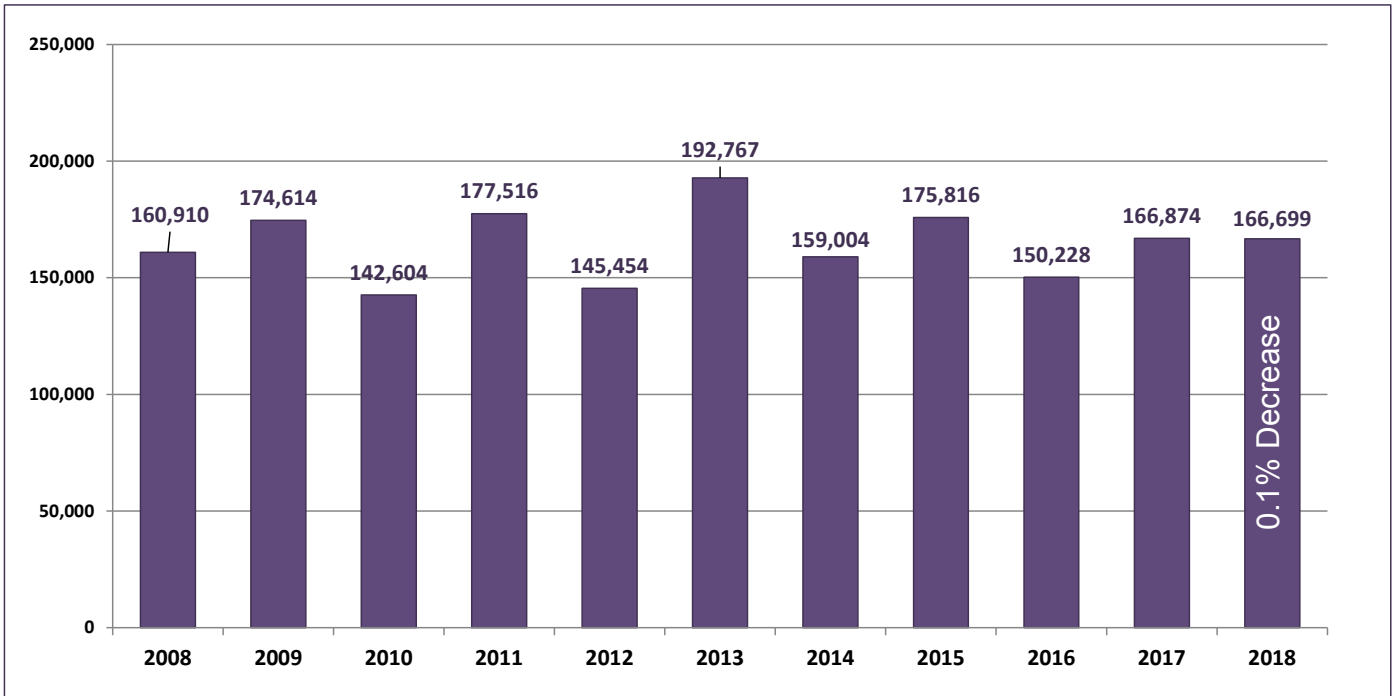
<b>Total:</b>	<b>\$ 1,981,232</b>	<b>\$ 2,126,801</b>	<b>\$ 1,996,191</b>	<b>\$ 1,928,886</b>	<b>\$ 1,899,720</b>	<b>\$ 1,955,089</b>	<b>2.9%</b>
<i>% change</i>	-60%	7%	-6%	-3%	-2%		
				<b>Annualized Budget</b>	<b>\$ 1,899,720</b>	<b>\$ 1,955,089</b>	<b>2.9%</b>
					<b>\$ 1,931,100</b>	<b>\$ 1,931,100</b>	<b>0.0%</b>

**Projected Over (under) Budget      \$23,989**

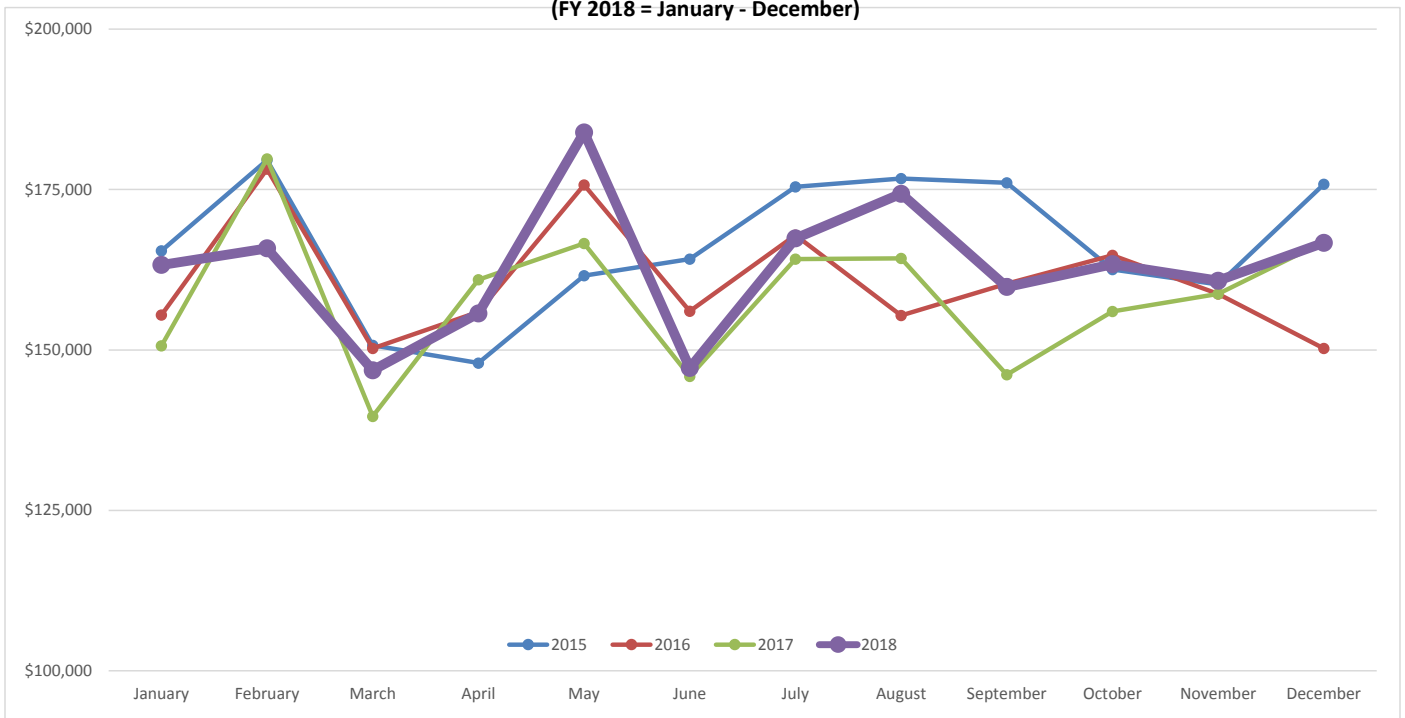
### Sales Tax FY 2017 - FY2018 Comparison



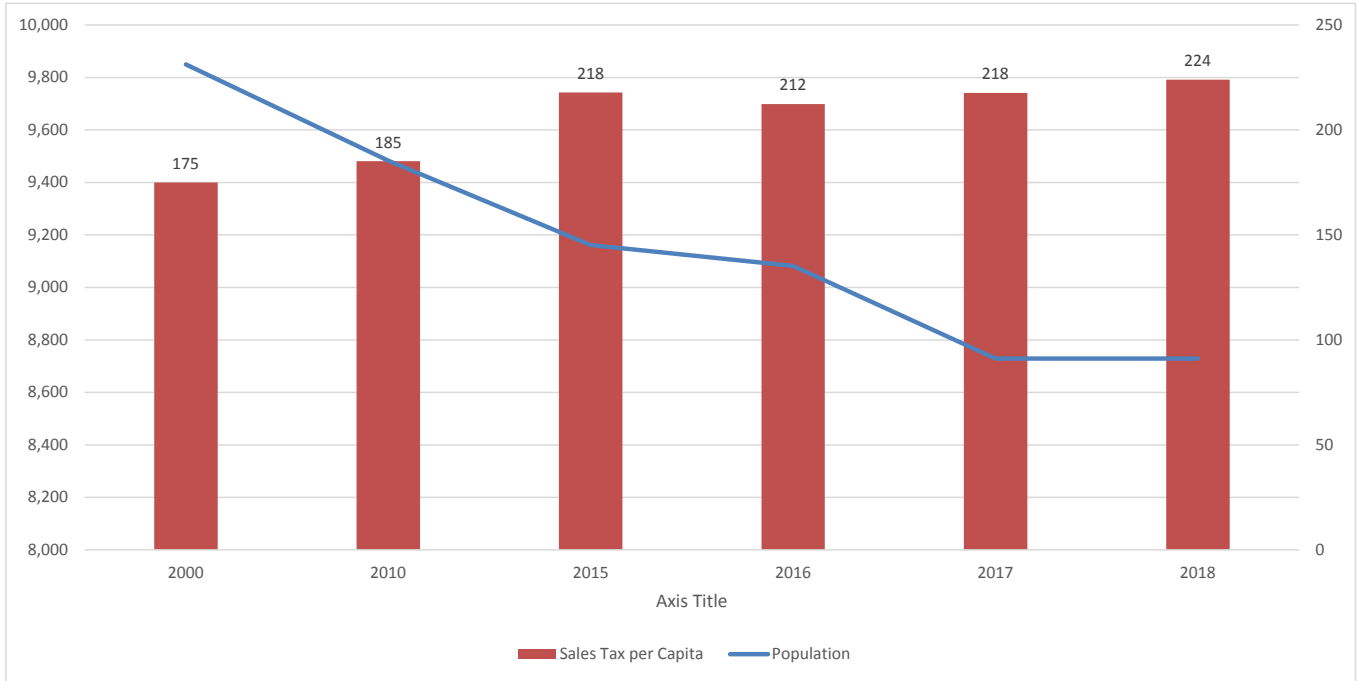
### December 1% Sales Tax 10 Year History FY 2008 - FY2018



### Sales Tax History Comparison - FY 2015 - FY2018 (FY 2018 = January - December)



### Sales Tax per Capita and Population Trend



### 2018 Sales Tax - One Percent General Fund Compensating Use Sales Tax and Sales Tax

