



# November 2021 Sales Tax Report

City of Independence Kansas

Office of the Finance Director

November 23, 2021





## Sales Tax Report for November 2021

### One Percent Sales Tax – General Fund

The attached spreadsheet and graphs provide comparisons by fiscal year of the **one (1) percent** sales tax levied for City purposes; another one percent is levied for the Special Use Sales Tax Allocation, and another one percent for Education.

NOTE: the “receipts” reported from the State of Kansas to the City for any given month are from sales generated two months prior. For example, the November receipts shown in this report were from sales in September 2021.

### **November 2021 is the eleventh month in the FY2021 Sales Tax Revenue account.**

- **November** receipts totaled **\$169,058**, which is a **DECREASE** of \$14,541 from November 2020, or **down 7.9%** (see Graph 2, “November 1% Sales Tax 10 Year History”).
- November 2021 receipts are the **SECOND HIGHEST November** receipts in the 10-year history (see Graph 2, “November 1% Sales Tax 10 Year History”).
- Year-to-date receipts totaled \$2,031,747 which is a **\$65,100 INCREASE** from 2020 year-to-date receipts (see Graph 3, “Sales Tax History Comparison”).
- Annualized FY2021 sales tax collected (with eleven months reported) is **\$2,216,451, or \$281,451 over** our **budgeted** amount of \$1,935,000; or **14.5% higher** than the budget. This would be \$80,529 (3.8%) over our FY2020 **actual collections** of \$2,135,922.
- With eleven months reported, we have **collected 105%** of the FY2021 budgeted amount of \$1,935,000.
- The **Compensating Use** sales tax portion made up **12.5%** of the \$169,058 total (\$21,200) (see Graph 5 “2021 1% Sales Tax – Monthly/Compensating Use Sales Tax and Sales Tax.”).

**THANK YOU**  
**For Shopping Local!**





## City of Independence Sales Tax - 1% City

### Comparison and History January - November 2021

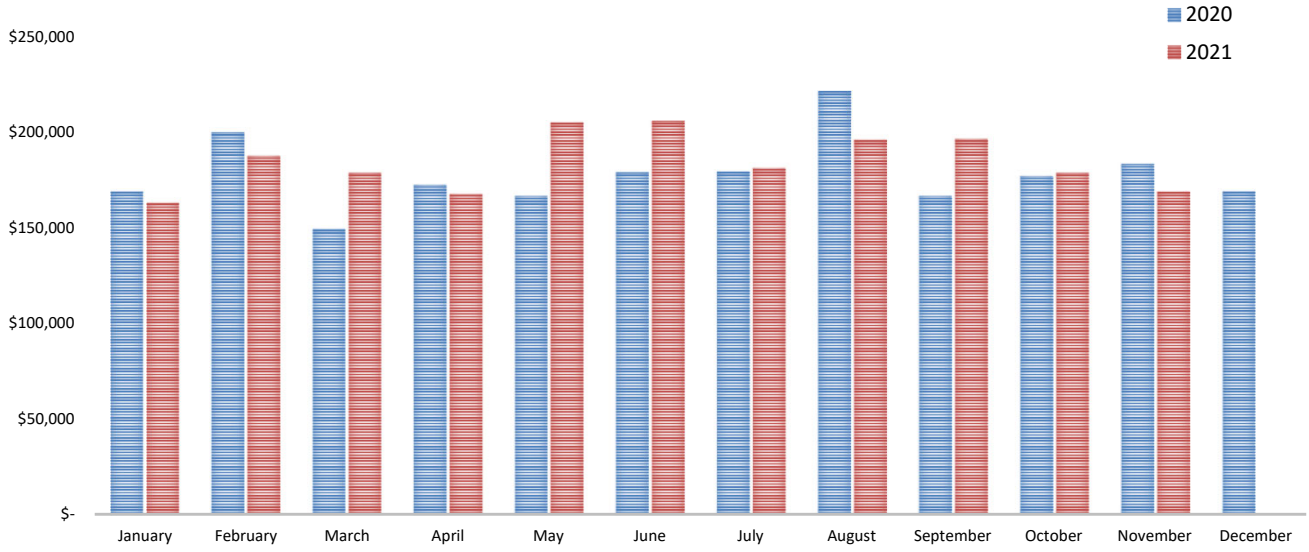
Month	Fiscal Year 2016	Fiscal Year 2017	Fiscal Year 2018	Fiscal Year 2019	Fiscal Year 2020	Fiscal Year 2021	% Change FY 20-21	% Change YTD
January	155,458	150,653	163,240	172,377	169,033	163,252	-3.4%	-3.4%
February	178,180	179,791	165,834	178,399	200,053	187,879	-6.1%	-4.9%
March	150,239	139,664	146,833	167,292	149,607	178,907	19.6%	2.2%
April	155,915	160,947	155,702	139,790	172,804	167,798	-2.9%	0.9%
May	175,729	166,595	183,899	187,854	166,798	205,282	23.1%	5.2%
June	156,021	145,881	147,180	158,263	179,353	206,304	15.0%	6.9%
July	167,882	164,178	167,392	169,308	179,594	181,396	1.0%	6.0%
August	155,386	164,255	174,341	180,142	221,770	196,182	-11.5%	3.3%
September	160,338	146,156	159,813	186,618	166,847	196,679	17.9%	4.8%
October	164,757	155,995	163,360	164,463	177,190	179,011	1.0%	4.5%
<b>November</b>	<b>158,752</b>	<b>158,730</b>	<b>160,797</b>	<b>159,872</b>	<b>183,599</b>	<b>169,058</b>	<b>-7.9%</b>	<b>3.3%</b>
December	150,228	166,874	166,699	159,474	169,275			-4.9%
<b>Total:</b>	<b>\$ 1,928,886</b>	<b>\$ 1,899,720</b>	<b>\$ 1,955,089</b>	<b>\$ 2,023,851</b>	<b>\$ 2,135,922</b>	<b>\$ 2,031,747</b>		
<i>% change</i>		-2%	3%	4%	6%	-4.9%		
				<b>Annualized Budget</b>	\$ 2,135,922	\$ 2,216,451	\$ 80,529	
					\$ 1,931,101	\$ 1,935,000	\$ 3,899	



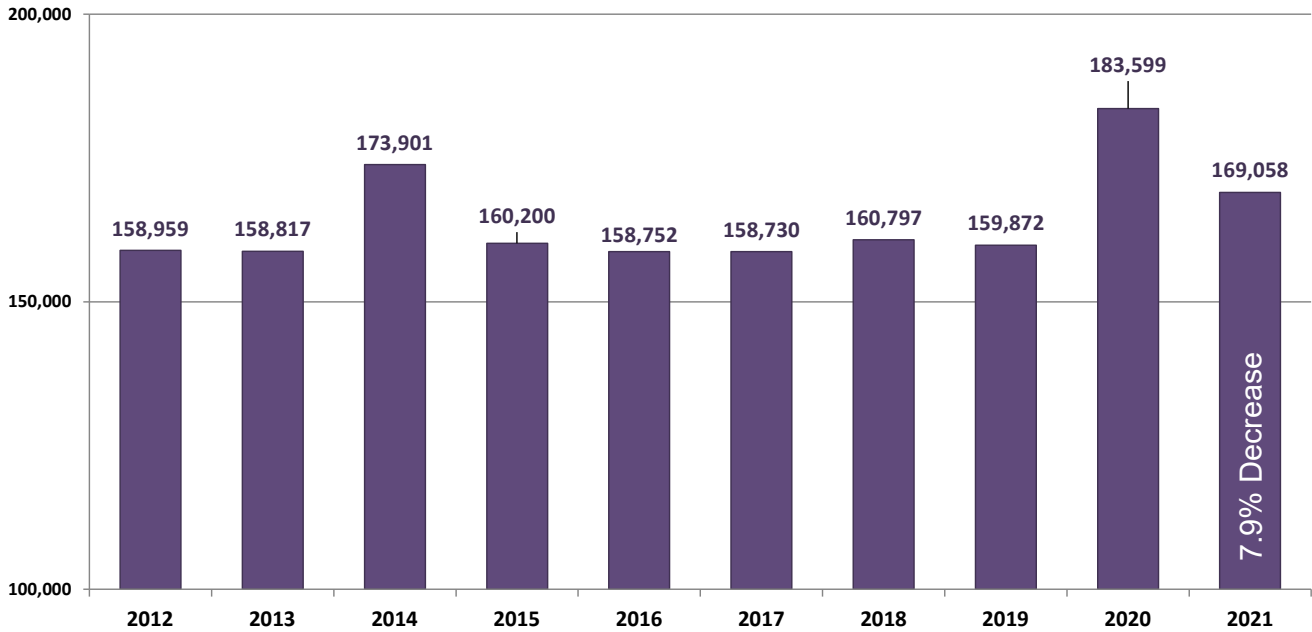
**Projected Over (under) Budget    \$ 204,821    \$ 281,451**

Projected % Over PY Actual	<b>3.8%</b>
YTD % of Budget Collected	<b>105.0%</b>
Projected % Over Budget	<b>14.5%</b>

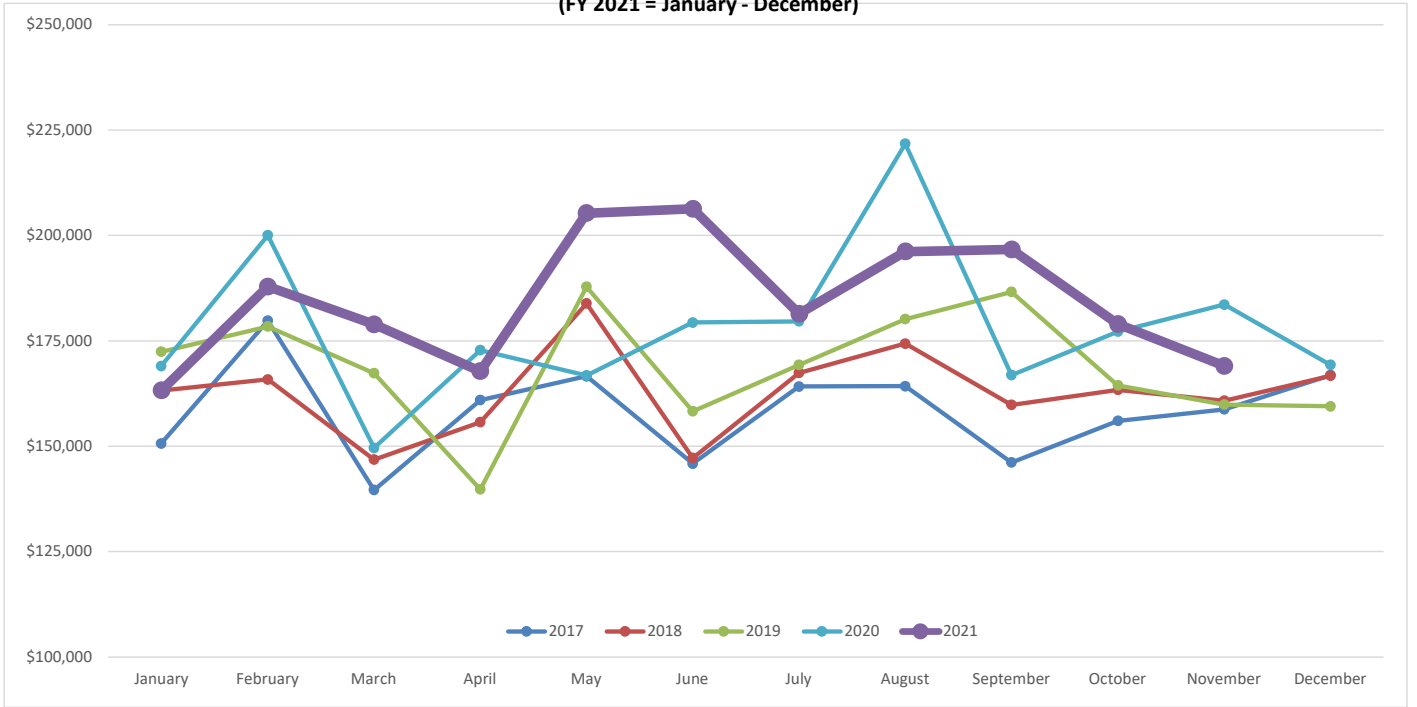
### Sales Tax FY 2020 - FY2021 Comparison



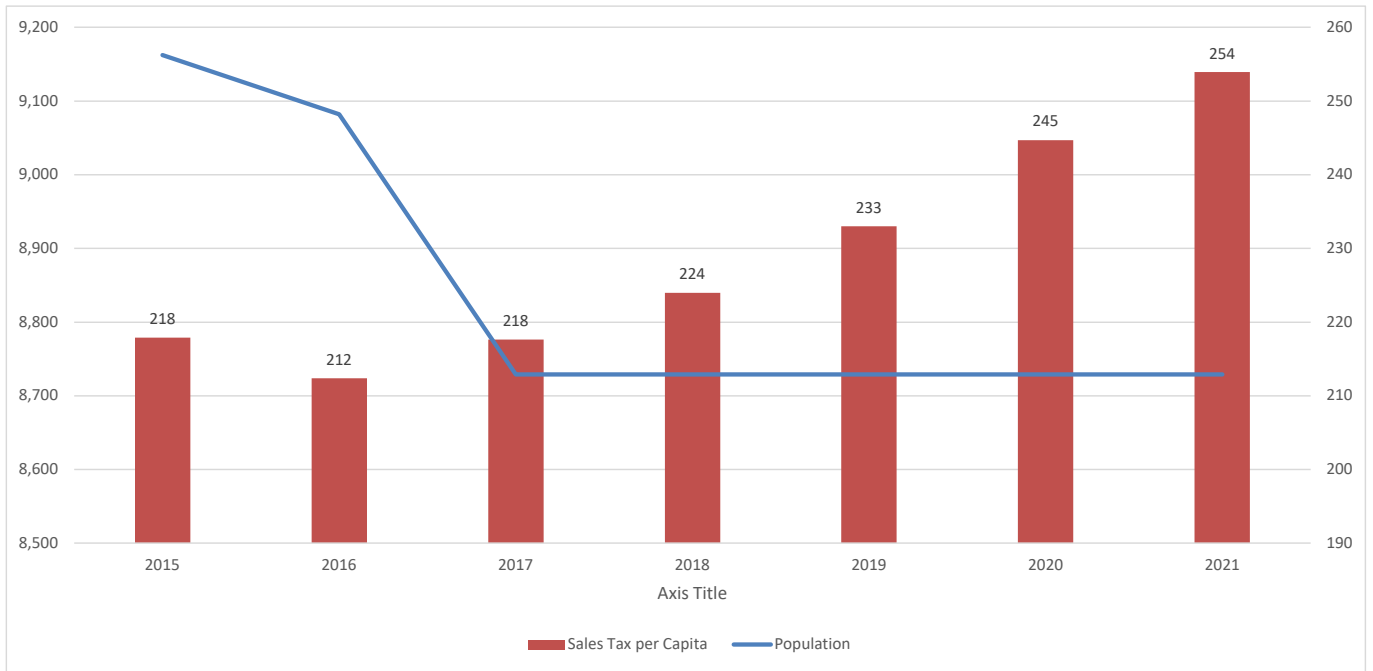
### November 1% Sales Tax 10 Year History FY 2012 - FY2021



### Sales Tax History Comparison - FY 2017 - FY2021 (FY 2021 = January - December)



### Sales Tax per Capita and Population Trend



## 2021 Sales Tax - One Percent General Fund

Compensating Use Sales Tax and Sales Tax

