



REQUEST FOR COMMISSION ACTION
CITY OF INDEPENDENCE
July 22, 2021

Department Administration

Director Approval David Cowan

AGENDA ITEM Consider approving the Kiddy Land Restroom design.

SUMMARY RECOMMENDATION City Staff is recommending acceptance of design option 2.

BACKGROUND The City of Independence received two options for the Kiddy Land Bathroom from BG Consultants. The Riverside Park Board and staff have reviewed this along with a representative from the Lions Club. They have prepared a cottage-style (gingerbread) bathroom that allows door décor art and/or faux planter boxes near the window decoration. Both drawings provide for a faux chimney which may act as a chase for the bathroom vent pipe. The second option has all the décor elements on the facades directly accessible to the sidewalks, keeping all decor elements where people are supposed to be gathering.

The plan was taken to the Park Board for review, and a representative from Lions Club was also present, and they selected option 2. City Staff has reviewed the options and agreed with option 2. If the Commission agrees, City Staff will instruct BG Consultants to finalize the plan and update cost estimates for bidding on the project.

SUGGESTED MOTION I move to approve option 2 by BG Consultants for the Kiddy Land Bathroom project.

SUPPORTING DOCUMENTS Design Options

NOT FOR CONSTRUCTION

Project Status



Manhattan Lawrence Emporia

ARCHITECTURE
BG Consultants, Inc.
4806 Vue Du Lac Place
Manhattan, KS 66503
ph: 785-537-7448
www.bgcons.com

CIVIL
BG Consultants, Inc.
4806 Vue Du Lac Place
Manhattan, KS 66503
ph: 785-537-7448
www.bgcons.com

M/E/P
BG Consultants, Inc.
1405 Wakarusa Dr.
Lawrence, KS 66049
ph: 785-749-4474
www.bgcons.com

STRUCTURAL
BG Consultants, Inc.
4806 Vue Du Lac Place
Manhattan, KS 66503
ph: 785-537-7448
www.bgcons.com

City of Independence

**Ralph Mitchell Zoo
ADA Restroom**

300 Miss Able Avenue
Independence, KS
67301

Revision Key		
No.	Date	Revision

Project Manager: Clint Hibbs, AIA

Project Engineer:

Checked By:

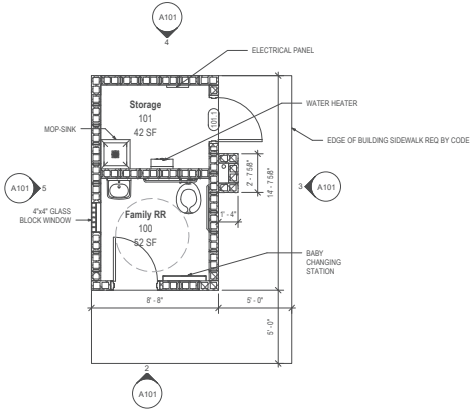
Project Number: 21-1197M

Date of Issue: 05/28/2021

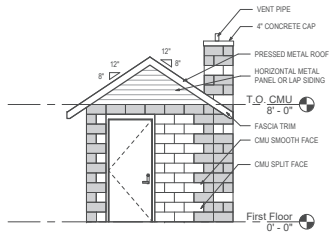
Sheet Number:

A101

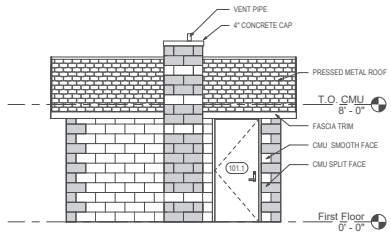
First Floor Plan



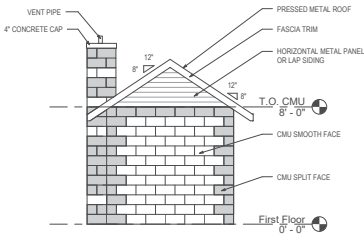
1 | First Floor Plan- Option 1
A101 | SCALE: 1/4" = 1'-0"



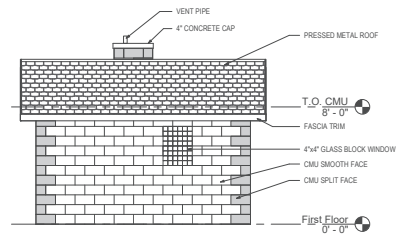
2 | Plan South Elevation
A101 | SCALE: 1/4" = 1'-0"



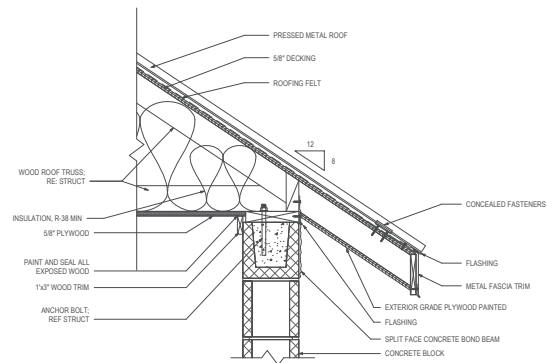
3 | Plan East Elevation
A101 | SCALE: 1/4" = 1'-0"



4 | Plan North Elevation
A101 | SCALE: 1/4" = 1'-0"



5 | Plan West Elevation
A101 | SCALE: 1/4" = 1'-0"



6 | Section Detail
A101 | SCALE: 1 1/2" = 1'-0"

NOT FOR CONSTRUCTION

Project Status



Manhattan Lawrence Emporia

ARCHITECTURE
BG Consultants, Inc.
4806 Vue Du Lac Place
Manhattan, KS 66503
ph: 785-537-7448
www.bgcons.com

CIVIL
BG Consultants, Inc.
4806 Vue Du Lac Place
Manhattan, KS 66503
ph: 785-537-7448
www.bgcons.com

M/E/P
BG Consultants, Inc.
1405 Wakarusa Dr.
Lawrence, KS 66049
ph: 785-749-4474
www.bgcons.com

STRUCTURAL
BG Consultants, Inc.
4806 Vue Du Lac Place
Manhattan, KS 66503
ph: 785-537-7448
www.bgcons.com

City of Independence

**Ralph Mitchell Zoo
ADA Restroom**

300 Miss Able Avenue
Independence, KS
67301

Revision Key

No.	Date	Revision

Project Manager: Clint Hibbs, AIA

Project Engineer:

Checked By:

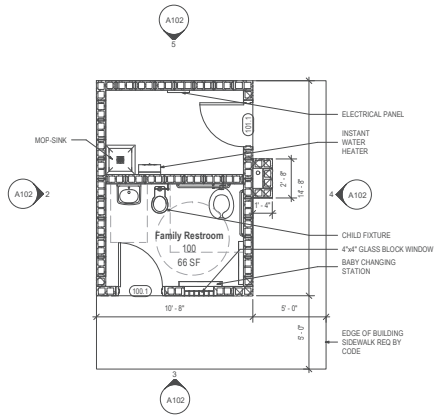
Project Number: 21-1197M

Date of Issue: 05/28/2021

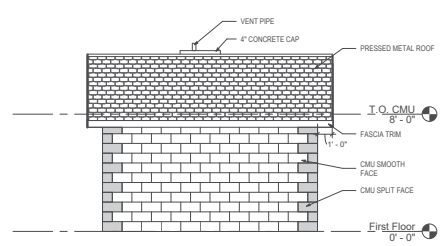
Sheet Number:

A102

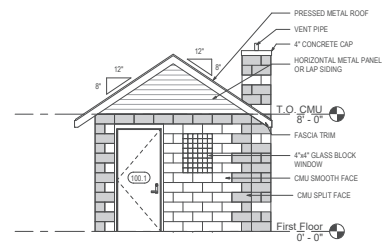
Option 2



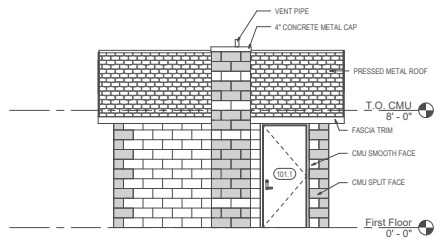
1 | First Floor Plan- Option 2
A102 | SCALE: 1/4" = 1'-0"



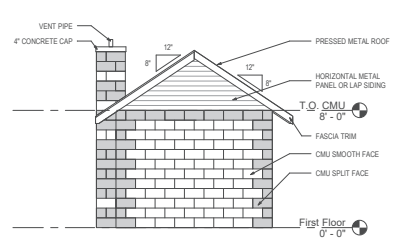
2 | West Elevation Option 2
A102 | SCALE: 1/4" = 1'-0"



3 | South Elevation Option 2
A102 | SCALE: 1/4" = 1'-0"



4 | East Elevation Option 2
A102 | SCALE: 1/4" = 1'-0"



5 | North Elevation Option 2
A102 | SCALE: 1/4" = 1'-0"