



September 2021 Sales Tax Report

City of Independence Kansas

Office of the Finance Director

September 27, 2021





Sales Tax Report for September 2021

One Percent Sales Tax – General Fund

The attached spreadsheet and graphs provide comparisons by fiscal year of the **one (1) percent** sales tax levied for City purposes; another one percent is levied for the Special Use Sales Tax Allocation, and another one percent for Education.

NOTE: the “receipts” reported from the State of Kansas to the City for any given month are from sales generated two months prior. For example, the September receipts shown in this report were from sales in July 2021.

September 2021 is the ninth month in the FY2021 Sales Tax Revenue account.

- **September** receipts totaled **\$196,679**, which is an **INCREASE** of \$29,831 from September 2020, or **up 17.9%** (see Graph 2, “September 1% Sales Tax 10 Year History”).
- September 2021 receipts are the **HIGHEST September** receipts in the 10-year history (see Graph 2, “September 1% Sales Tax 10 Year History”).
- Year-to-date receipts totaled \$1,683,678 which is a **\$77,820 INCREASE** from 2020 year-to-date receipts (see Graph 3, “Sales Tax History Comparison”).
- Annualized FY2021 sales tax collected (with nine months reported) is **\$2,244,904, or \$309,904 over** our **budgeted** amount of \$1,935,000; or **16% higher** than the budget. This would be \$108,982 (5.1%) over our FY2020 **actual collections** of \$2,135,922.
- With nine months reported, we have **collected 87%** of the FY2021 budgeted amount of \$1,935,000.
- The **Compensating Use** sales tax portion made up **14.1%** of the \$196,679 total (\$27,830) (see Graph 5 “2021 1% Sales Tax – Monthly/Compensating Use Sales Tax and Sales Tax.”).







THANK YOU
For Shopping Local!





City of Independence Sales Tax - 1% City

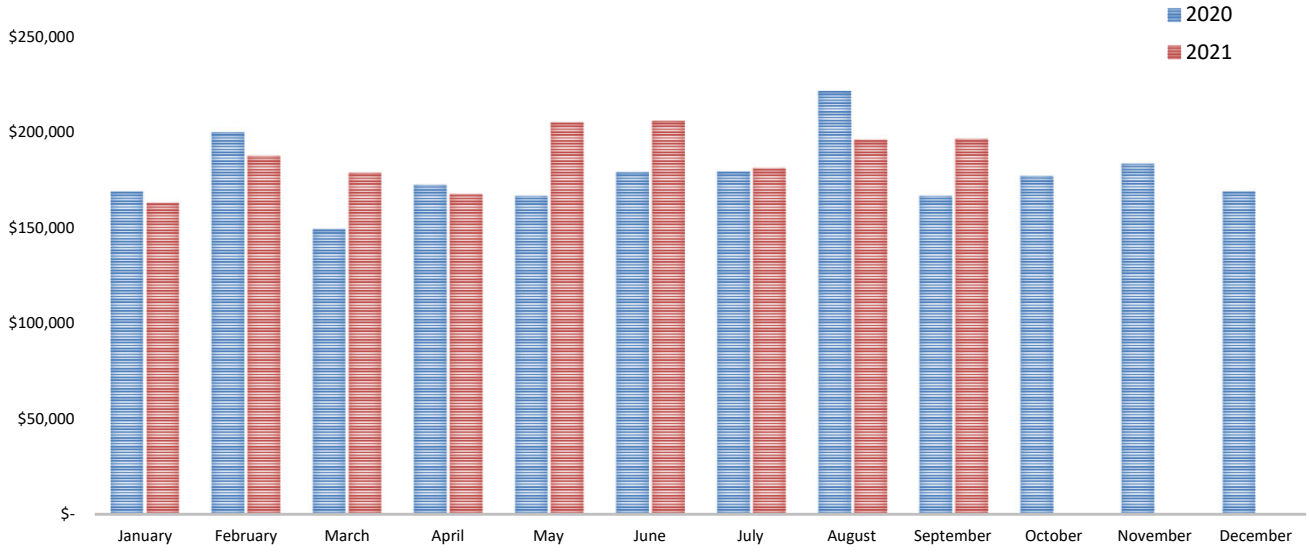
Comparison and History January - September 2021

	Fiscal Year	Fiscal Year	Fiscal Year	Fiscal Year	Fiscal Year	Fiscal Year	% Change	% Change
Month	2016	2017	2018	2019	2020	2021	FY 20-21	YTD
January	155,458	150,653	163,240	172,377	169,033	163,252	-3.4%	-3.4%
February	178,180	179,791	165,834	178,399	200,053	187,879	-6.1%	-4.9%
March	150,239	139,664	146,833	167,292	149,607	178,907	19.6%	2.2%
April	155,915	160,947	155,702	139,790	172,804	167,798	-2.9%	0.9%
May	175,729	166,595	183,899	187,854	166,798	205,282	23.1%	5.2%
June	156,021	145,881	147,180	158,263	179,353	206,304	15.0%	6.9%
July	167,882	164,178	167,392	169,308	179,594	181,396	1.0%	6.0%
August	155,386	164,255	174,341	180,142	221,770	196,182	-11.5%	3.3%
September	160,338	146,156	159,813	186,618	166,847	196,679	17.9%	4.8%
October	164,757	155,995	163,360	164,463	177,190			-5.6%
November	158,752	158,730	160,797	159,872	183,599			-14.4%
December	150,228	166,874	166,699	159,474	169,275			-21.2%
								
Total:	\$ 1,928,886	\$ 1,899,720	\$ 1,955,089	\$ 2,023,851	\$ 2,135,922	\$ 1,683,678		
<i>% change</i>		-2%	3%	4%	6%	-21.2%		
				Annualized	\$ 2,135,922	\$ 2,244,904	\$ 108,982	
				Budget	\$ 1,931,101	\$ 1,935,000	\$ 3,899	

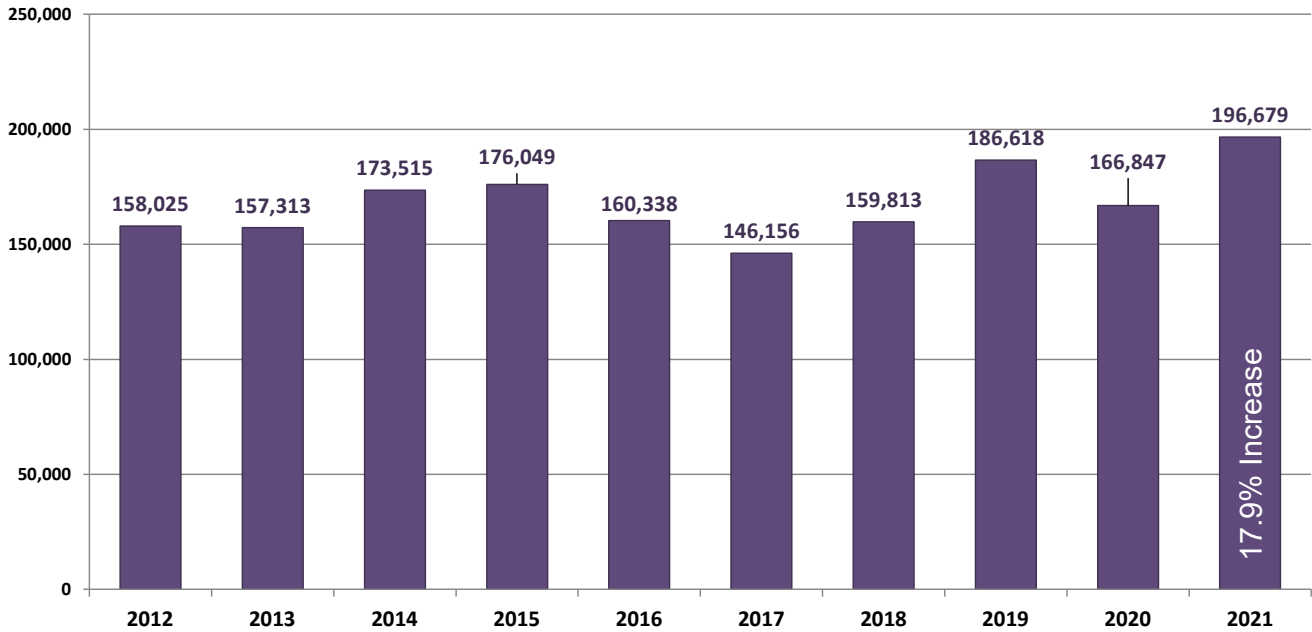
Projected Over (under) Budget \$ 204,821 \$ 309,904

Projected % Over PY Actual	5.1%
YTD % of Budget Collected	87.0%
Projected % Over Budget	16.0%

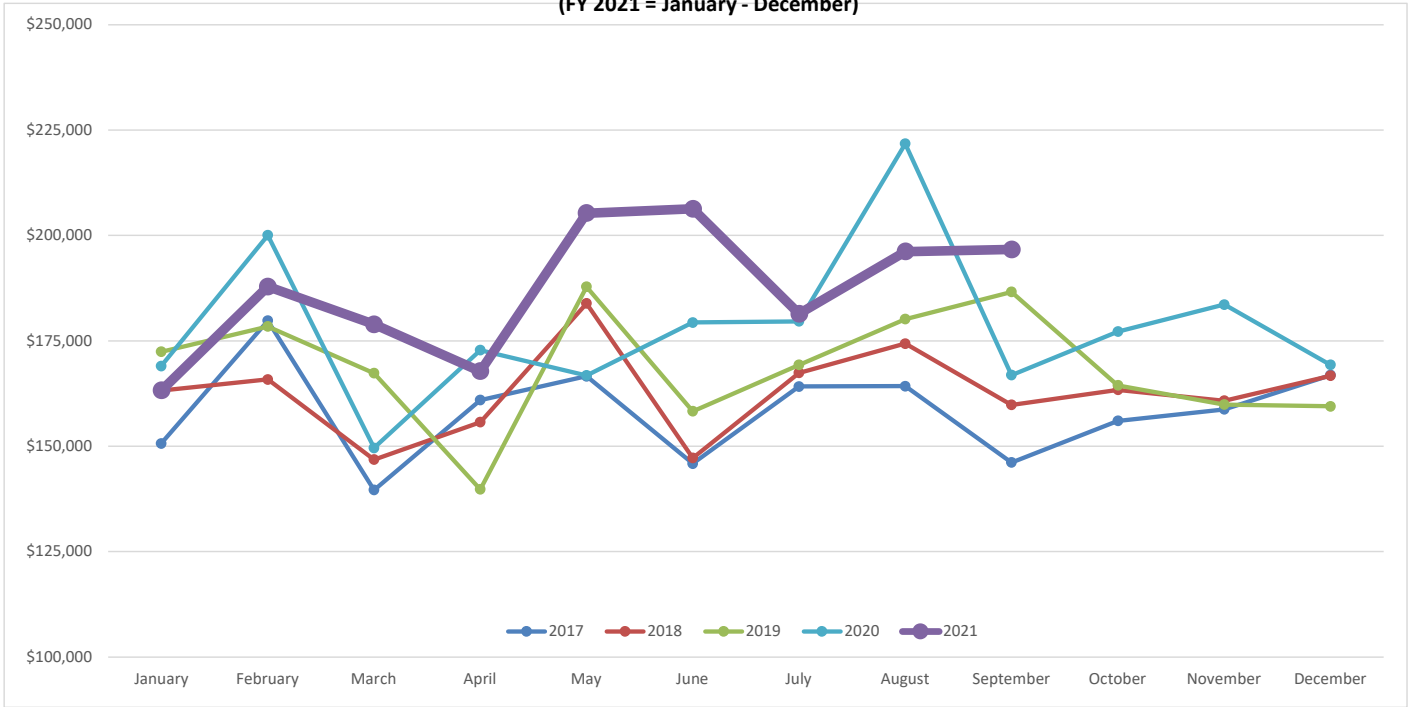
Sales Tax FY 2020 - FY2021 Comparison



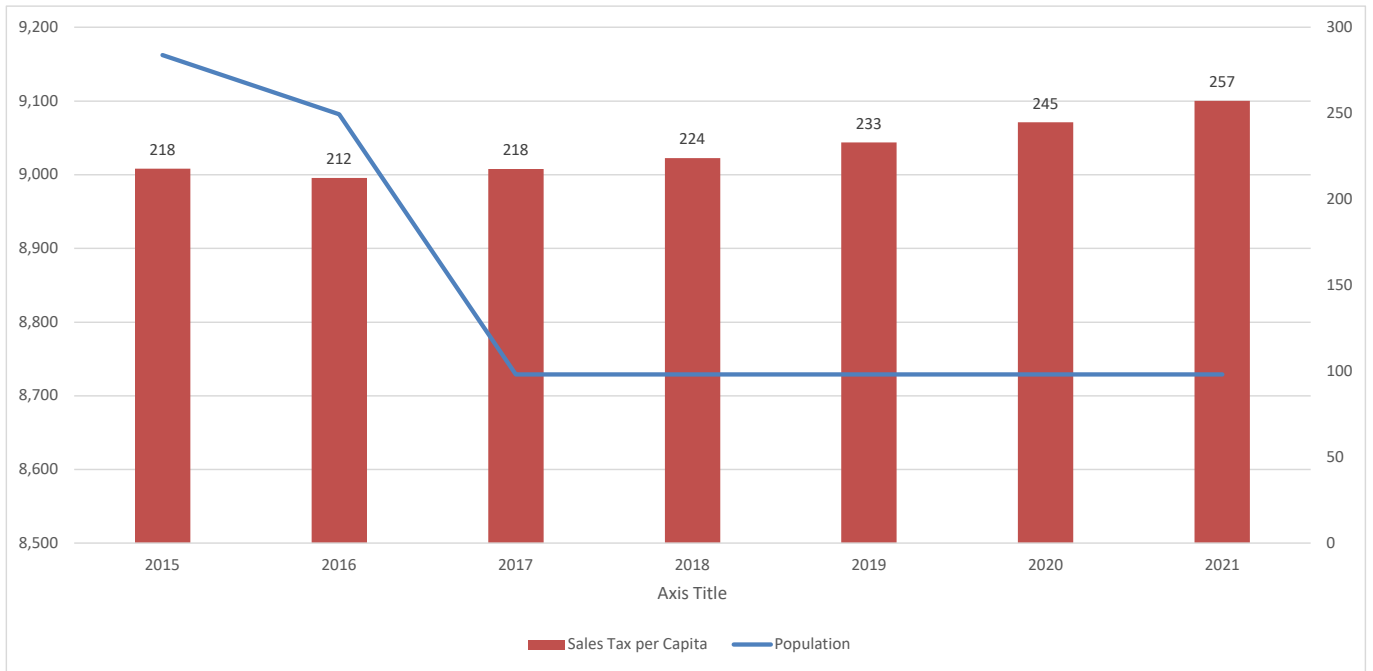
September 1% Sales Tax 10 Year History FY 2012 - FY2021



Sales Tax History Comparison - FY 2017 - FY2021 (FY 2021 = January - December)



Sales Tax per Capita and Population Trend



2021 Sales Tax - One Percent General Fund

Compensating Use Sales Tax and Sales Tax

